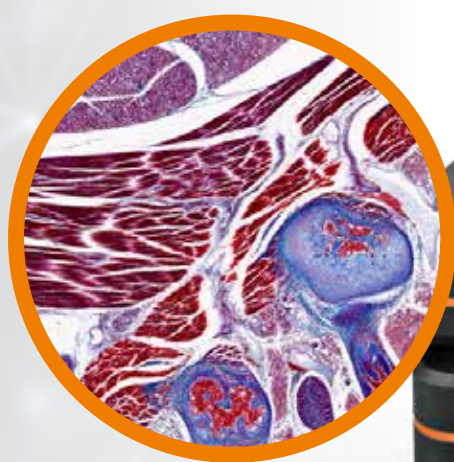




TISSUEGNOSTICS
PRECISION THAT INSPIRES

STRATAFAXS II

STREAMLINED TISSUE CYTOMETRY



STREAMLINED TISSUE CYTOMETRY

INTUITIVE SCANNING

Instantly navigate across slides in real-time

IMAGING MODES

Live, Instant Scan, Slide Scan

COMPACT DESIGN

2-slide brightfield scanning

FAST

Live stitching, barcode reader



AI INTEGRATED ANALYSIS

with deep and machine learning

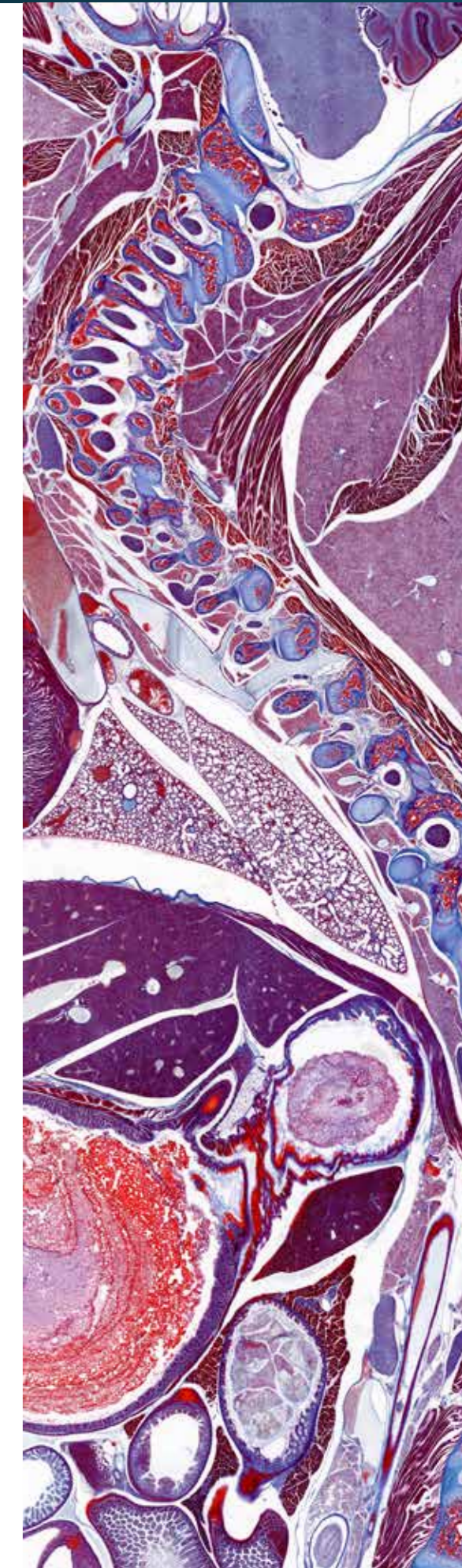
COMPREHENSIVE

Quantitative image analysis (StrataQuest, HistoQuest)

FULLY DIGITAL

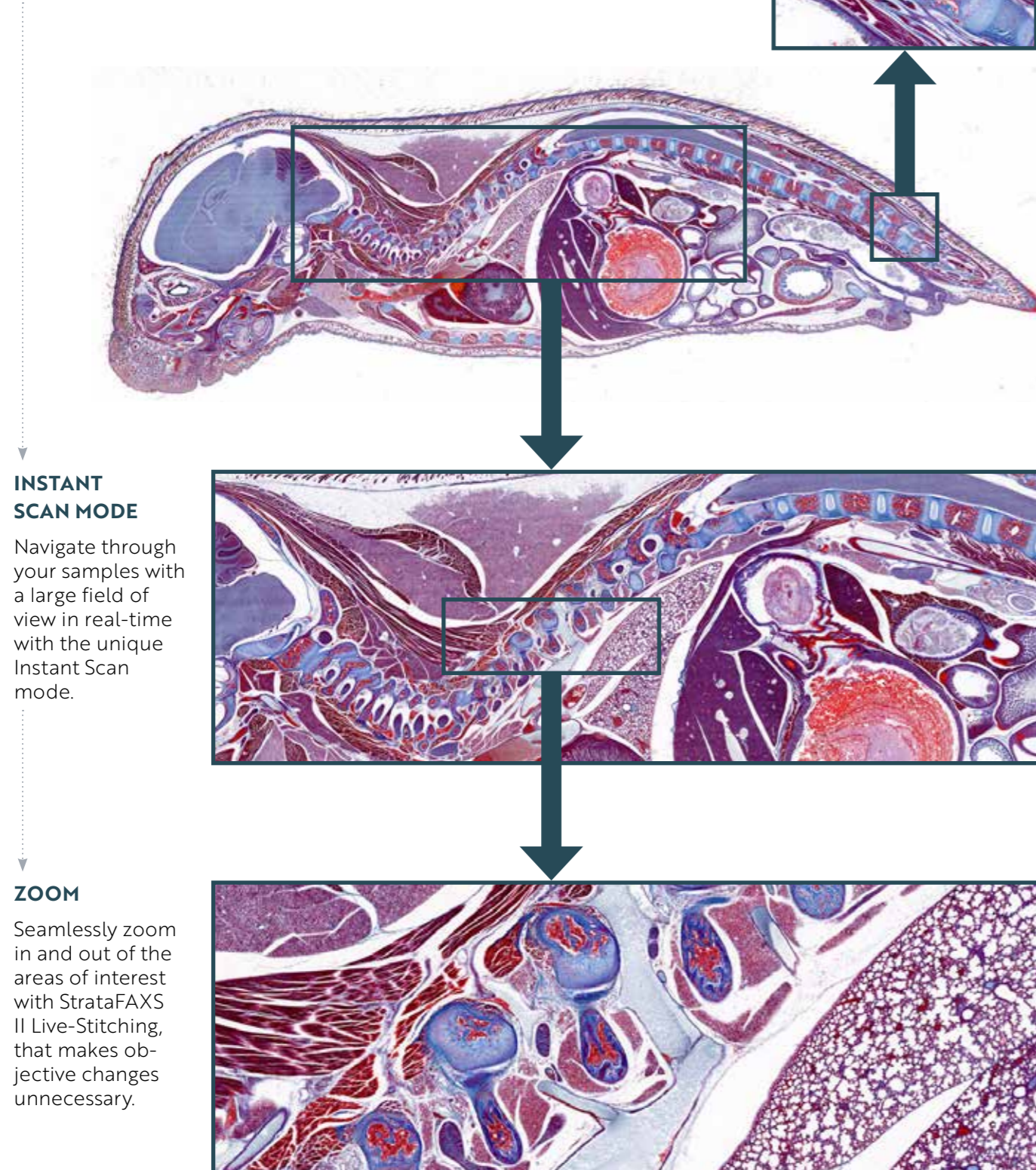
View and annotate samples live remotely

StrataFAXS II is an upright brightfield slide scanner for acquisition and analysis of HE/IHC processed tissue sections, smears and Tissue Microarrays (TMA). StrataFAXS II with its innovative workflow allows you to directly work on your samples via real-time scanning and live stitching. The system is equipped with HistoQuest single cell analysis software and/or StrataQuest contextual image cytometry software.



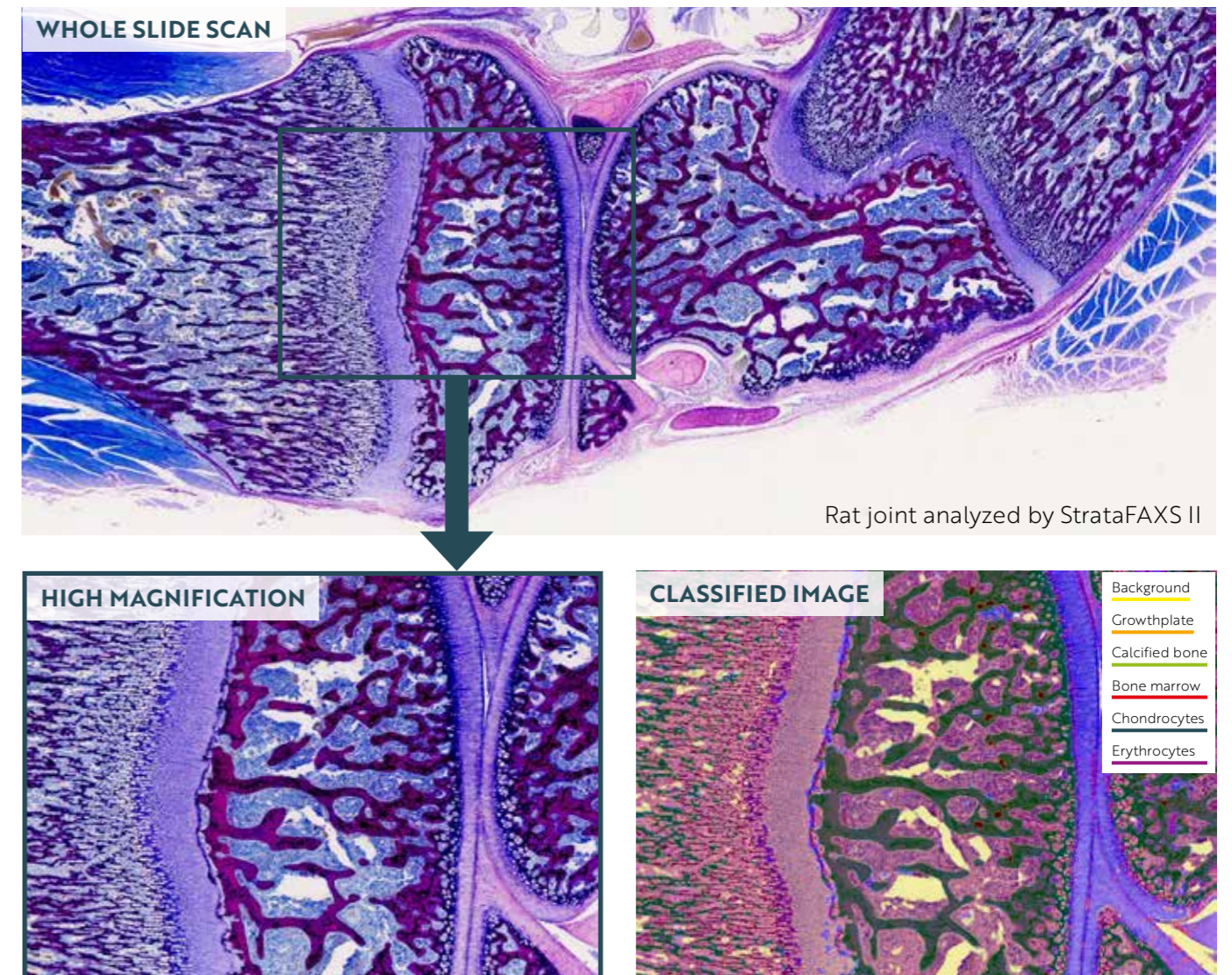
TECHNOLOGY – WHOLE SLIDE IMAGING

StrataFAXS II is a compact 2-slide brightfield scanner with a contemporary user interface enabling an interactive workflow and/or the unique instant scan mode.



AI-BASED IMAGE ANALYSIS

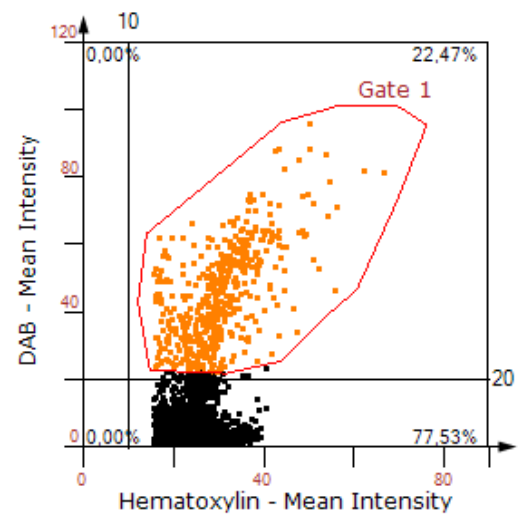
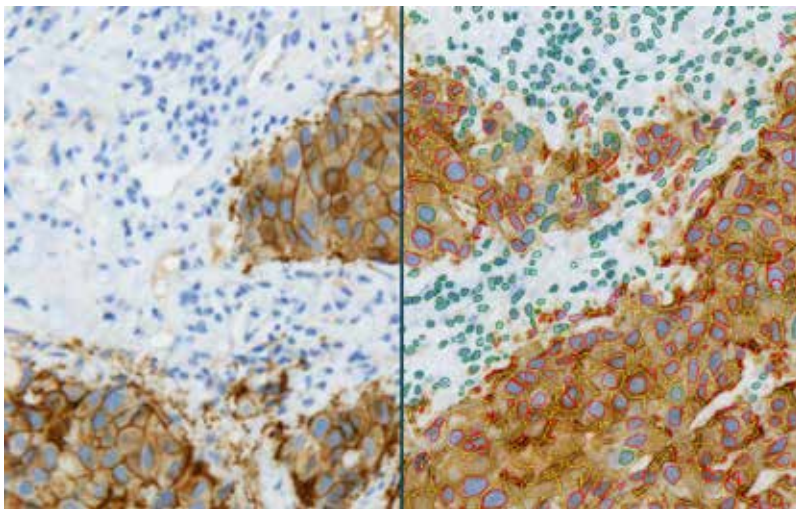
Combine StrataFAXS II with TG's image analysis solutions StrataQuest (contextual tissue cytometry) or HistoQuest (single-cell image analysis). StrataQuest comes with an a machine learning module for automated classification of histological entities (e.g. tumor foci, epidermis, glands, glomeruli) and a deep neural network for precise nuclear segmentation even at high cellular densities and low expression levels.



The StrataQuest integrated classifier enables a fast separation of the tissue into any number of morphological entities. The machine learning-based classifier works by marking just a few areas representative for the specific morphological entities of interest and the background. Based on these defined areas the classifier is able to separate the tissue into specific tissue classes, including the background, and will automatically generate specific measurement masks for the detected areas. These obtained classifier masks can be further examined by analysing tissue class-specific parameters including area (mm²), cell count, percentage of marker-positive cells within the tissue class, cellular measurements (nuclear, cytoplasmic, and membrane), etc.

SINGLE CELL ANALYSIS

Use HistoQuest for a fully automated workflow in which nuclear segmentation and membrane detection are quickly applied to your samples. Measure expression levels of markers located in the nucleus, cytoplasm and/or cell membrane.



Breast cancer tissue stained for HER2 (DAB, brown) and hematoxylin (blue) analysed with HistoQuest. Red outlines - HER2 positive cells; green outlines - HER2 negative cells; yellow - HER2 positive cell membranes.

PROPERTIES

Special feature	3 operating modes: Instant Scan, Live, and Slide Scan AI based image cytometry Even complex image analysis tasks are simplified through APPs
Design	Compact scanner, integrated brightfield camera and light-source, PC with 2 Monitors
Scanner stand	Upright
Scanning mode	Brightfield
Compatible slide formats	Standard slides and double-sized slides
Slide capacity	2 standard slides (1 double-sized)
Supported objectives	20x, 40x, 60x air
Light source	White light LED
Image analysis software	StrataQuest (contextual image analysis) StrataQuest brightfield APPs (customized analysis solutions) HistoQuest (single cell analysis)



REFERENCE PUBLICATIONS

TissueGnostics systems produce valuable research imaging on six continents around the world and the list of publications grows daily. Check TG's searchable online database of publications to see how TissueGnostics can support you!

www.tissuegnostics.com

MEET US GLOBALLY



TissueGnostics Austria GLOBAL HEADQUARTER

Taborstrasse 10/2/8
A-1020 Vienna

AUSTRIA

Tel.: +43/1/216 11 90

office@tissuegnostics.com



TissueGnostics Asia Pacific BRANCH CHINA

Room 506,
No.6 Auto Museum East Rd,
Fengtai District Beijing

CHINA

Tel.: +86/400/898 1980

office@tissuegnostics.cn



TissueGnostics USA BRANCH NORTH AMERICA

12522 Moorpark Street
Suite #106
Los Angeles, CA 91604

USA

Tel.: +1/818/856 8056

office@tissuegnostics.com



TissueGnostics Romania BRANCH EASTERN EUROPE

RO17719397
Str. Sf. Andrei, nr. 15A
700028 Iasi

ROMANIA

Tel.: +40/332/40 58 66

office@tissuegnostics.com

www.tissuegnostics.com