

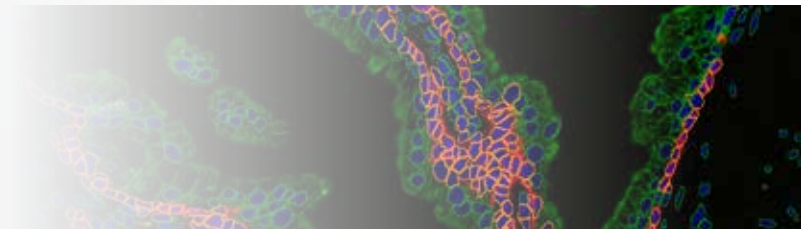
# TISSUEGNOSTICS

PRECISION THAT INSPIRES



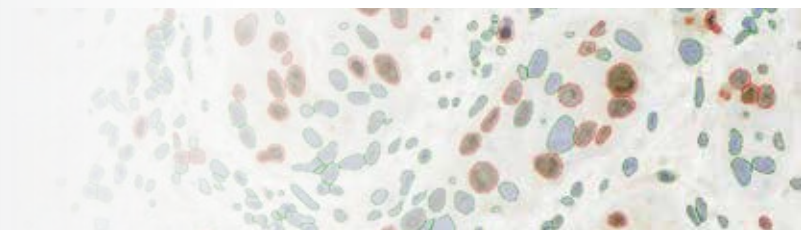
## TISSUEQUEST

IF CELL ANALYSIS SOFTWARE



## HISTOQUEST

IHC/HC CELL ANALYSIS SOFTWARE



---

7<sup>TH</sup> GENERATION OF  
IMAGE CYTOMETRY SOLUTIONS

## 01 DIGITAL SAMPLE

import fluorescence/brightfield scans of tissue sections, TMAs or cell cultures from various sources

## 02 AUTOMATED SEGMENTATION

allows detection of cells and stained areas based on morphological or antibody staining

## 03 CONTEXT-BASED TISSUE CYTOMETRY

manual dissection of complex tissues by defining regions of interest

## 04 QUANTITATIVE ANALYSIS

automatic detection of various parameters attributed to cells and markers

## 05 DATA VERIFICATION

various easy-to-use tools for observational analysis

## 06 EXPORT RESULTS

straight-forward workflow for exporting the desired parameters, images and graphs

## TG USER EXPERIENCES

## REFERENCE PUBLICATIONS

Please check online for the constantly updated list of reference publications at

[www.tissuegnostics.com](http://www.tissuegnostics.com)



»TissueQuest and HistoQuest PROVIDE QUANTITATIVE ANALYSIS OF TISSUE SECTIONS AND CONFLUENT CELL LAYERS STAINED BY IMMUNOFLUORESCENCE OR IMMUNOHISTOCHEMISTRY.«

**TISSUE GNOSTICS –  
A PRECISION MEDICINE  
COMPANY**

## 01

## NEW VERSION: TISSUEQUEST® AND HISTOQUEST® V7

TissueGnostics is proud to announce the release of TissueQuest and HistoQuest version 7. In their 7<sup>th</sup> generation these highly cited image analysis applications advance FACS-like data analysis with an improved graphical user interface and added 3<sup>rd</sup> party virtual slide format compatibility.

## 02

## PRECISION AND REPRODUCIBILITY WITH EASE

The TissueQuest and HistoQuest workflow is designed for simplicity and usability. Automated analysis starts with a few simple settings or by loading an analysis template.

## 03

Proven proprietary algorithms for nuclear segmentation and detection of nuclear, membrane and cytoplasmic markers reduce the complexity of the analytical workflow, measurement and reporting.

## 04

Data visualization using interactive flow cytometry like scattergrams (dot plots) and histograms permit analysis of subpopulations by gates.

## 05

Backward gating and Forward-connection between image and data display simplifies identification of subpopulations and unique understanding of the acquired data.

## 06

Fully supported batch analysis enables unattended processing of high sample volumes and TMA slides.

User defined regions of interest (ROIs) for localized analysis.

Flexible data export and statistical reporting including images and graphs.



**DR. RUPERT ECKER**  
TissueGnostics, Vienna, Austria

01

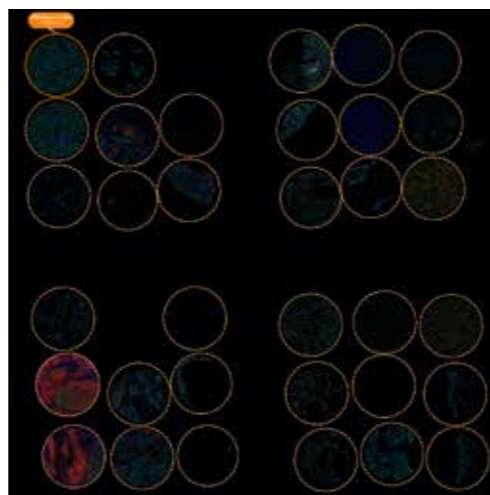
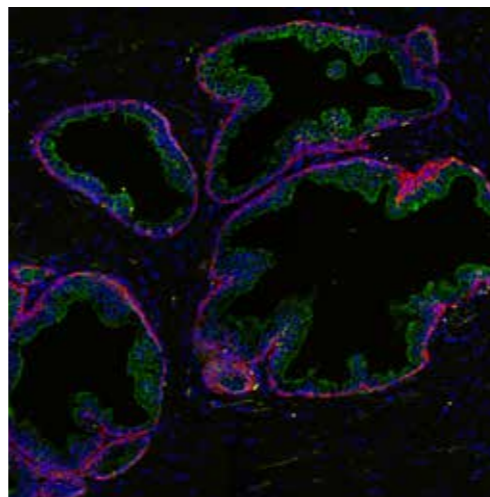
## 01 DIGITAL SAMPLE

Import fluorescence and brightfield scans of tissue sections, TMAs, and cell cultures from many popular scanning platforms.

### SUPPORTED FILE FORMATS

TissueQuest and HistoQuest support the following file formats

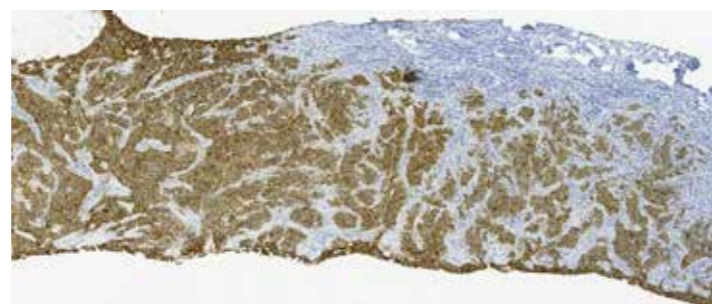
- TissueFAXS platform (aqproj)
- StrataFAXS II (vmic)
- PreciPoint (vmic, gtif)
- Generic Big TIFF Import
- OME-Tiff
- JPEG, PNG, BMP, TIFF
- Zeiss (dzi)
- Hamamatsu NanoZoomer (ndpi)
- Aperio (svs)
- Leica (scn)
- 3D HISTECH Panoramic
- Mirax (mrxs)
- Olympus (vsi)
- More slide scanners to be added



TissueQuest and HistoQuest support the ICE (Image Cytometry Experiment) file format, thereby enabling raw data export to the *FCS Express Image Cytometry Tool* (De NovoTMsoftware). *FCS Express Image Cytometry* software (<https://denovosoftware.com/image-cytometry/>) combines a flexible user interface with extensive and interactive data analysis including advanced statistics options and advanced high-dimensional analysis and machine learning algorithms such as t-SNE, UMAP, FlowSOM and many others.

### USE HistoQuest FOR THE ANALYSIS OF ALL KINDS OF IHC/HC STAININGS

- DAB
- AEC
- HistoGreen
- Discovery purple
- HE
- Trichrome
- ...



06

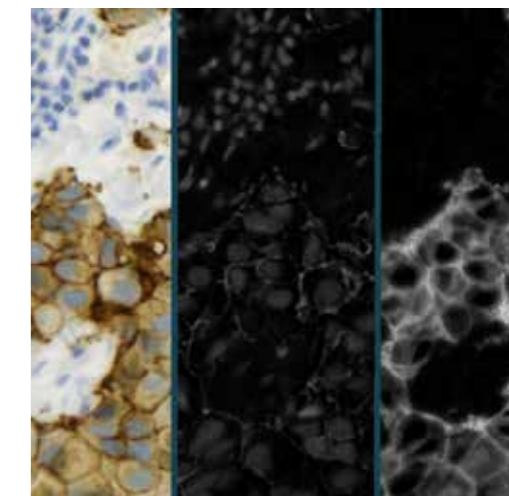
01

## 02 AUTOMATED SEGMENTATION

### COLOR SEPARATION

HistoQuest color separation uses spectral unmixing of RGB color information in bright-field images to colorimetrically separate image components into individual channels for each identified marker. HistoQuest supports separation of mixtures of up to four blended chromogens or markers.

Fluorescence analysis in TissueQuest does not require colorimetric separation.

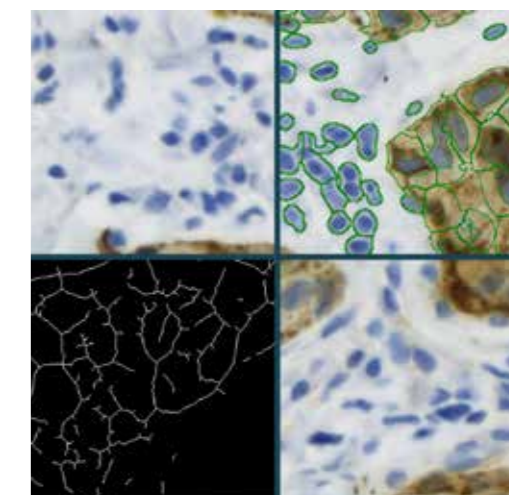


06

### SEGMENTATION ALGORITHMS

Choose from multiple algorithms for automated segmentation for highly flexible data analysis.

- **Nuclear Segmentation** – detect events/cells with various shapes and sizes and segment them into nucleus, cytoplasm and membrane (requires the membranes to be stained).
- **Total Area Measurement** – measure the total area stained by a marker.
- **Dot Detection** – detect dot-like features (e.g. FISH, CISH). This algorithm can be added to Nuclear Segmentation or Total Area Measurement algorithms.
- **Membrane Detection** – discriminate nuclear membrane from nucleoplasmic staining.

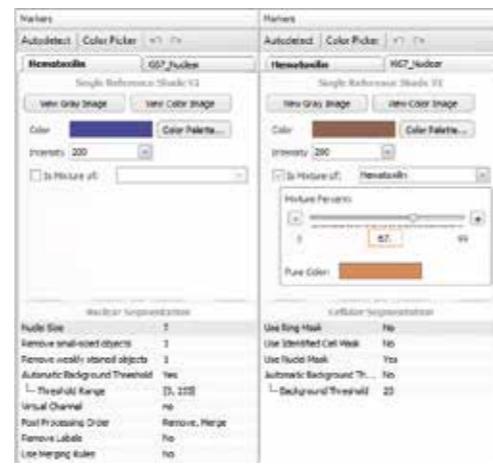


01

## IHC MARKER PROFILES

HistoQuest includes dedicated marker management functionality. Colorimetric marker definition includes parameters for detection and measurement masks. Quickly and easily test your color segmentation parameters within your sample.

Store marker profiles for future analyses.



02

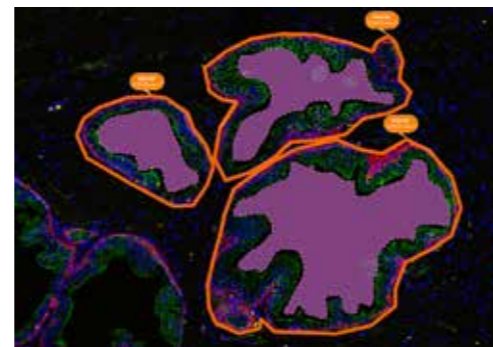
03

Save TissueQuest fluorescence analysis profiles for re-use, repeatability and precision.

04

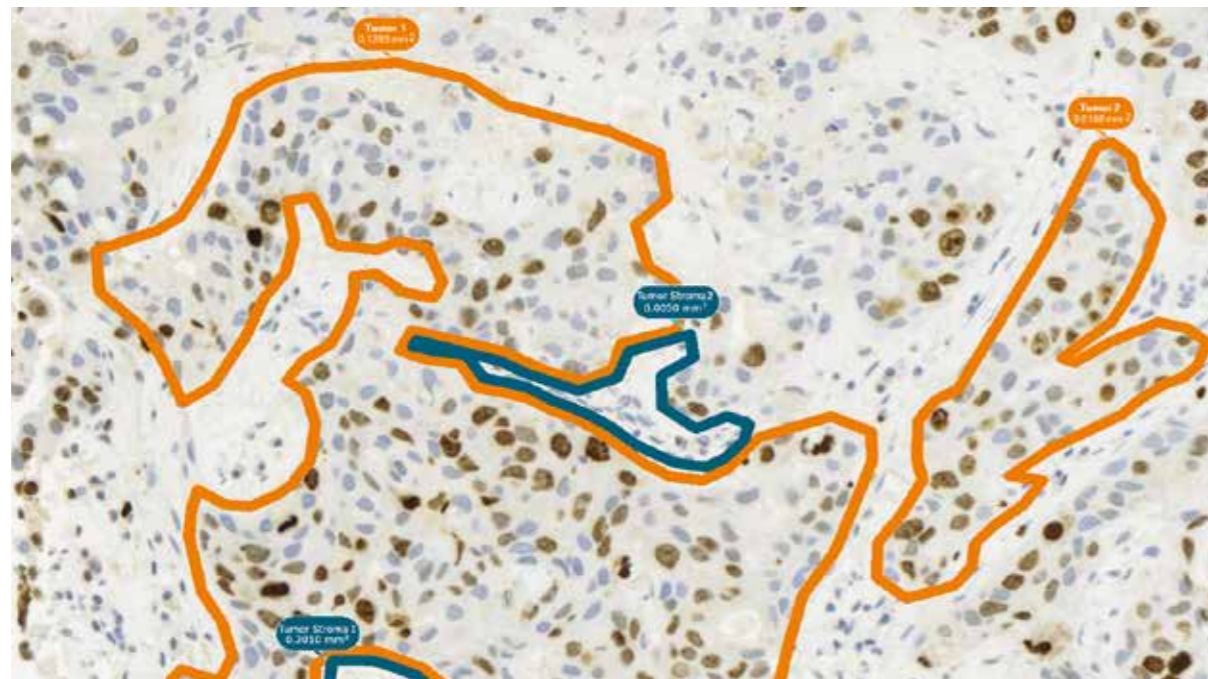
## 03 CONTEXT-BASED TISSUE CYTOMETRY

Intuitively digitally dissect your sample into multiple regions of interest (ROIs) to restrict your analysis to any part of the sample. Group regions together for aggregated analysis and reporting.



05

06



01

## 04 QUANTITATIVE ANALYSIS

TissueQuest and HistoQuest automate the measurement of multiple parameters for each cell, ROI, group of ROIs, and whole samples across multiple samples/slides. Apply prepared analysis protocols for rapid analysis and straight forward reporting.

Both applications support up to 18 individual metrics per marker for each detected object and analysis can be easily adjusted to fit evolving requirements. TissueGnostics Image Cytometry software analyzes and reports on populations of millions of cells at a time with clarity and precision.

- Area ( $\mu\text{m}^2$ )
- Mean Intensity
- Minimum of Intensity
- Maximum of Intensity
- Range of Intensity
- Sum Intensity
- Percentile 75%
- Percentile - Lower Mean 75%
- Percentile - Upper Mean 75%
- Variance of Intensity
- STD of Intensity
- Equivalent Diameter ( $\mu\text{m}$ )
- Perimeter ( $\mu\text{m}$ )
- Compactness
- Eccentricity
- Minimum Width ( $\mu\text{m}$ )
- Maximum Length ( $\mu\text{m}$ )
- Feret Ratio

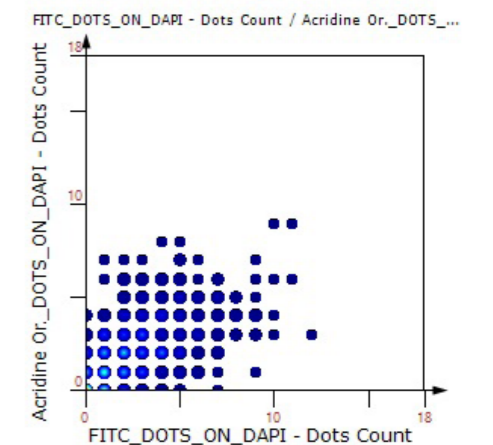
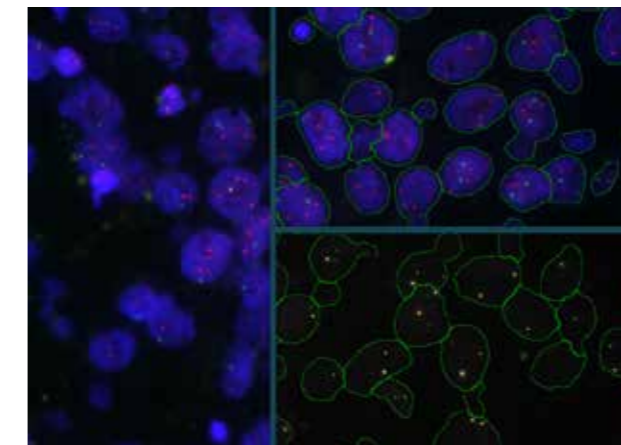
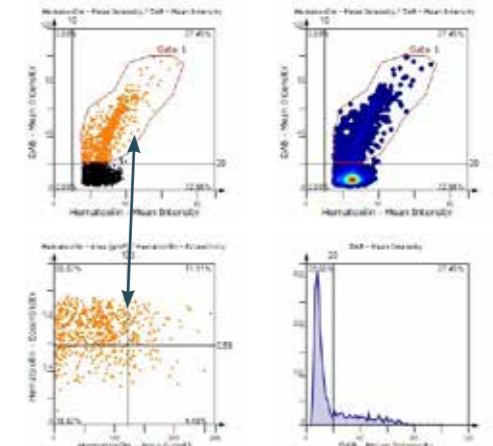
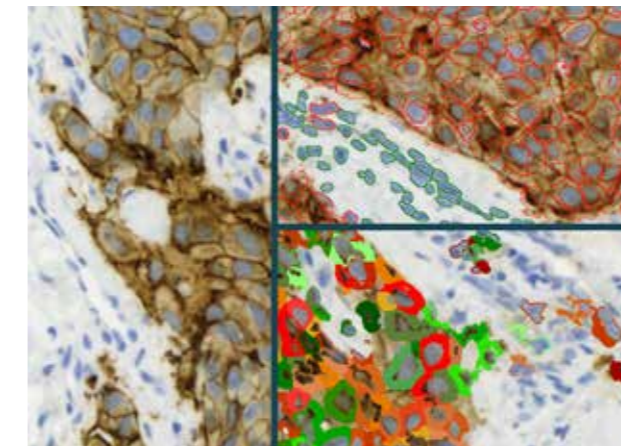
02

03

04

05

06



01

## 05 DATA VERIFICATION EXPLORE YOUR SAMPLE!

Gain insight through contextual analysis that juxtaposes and connects data and sample. Use visual exploration, comparison, display, verification to better make qualified conclusions.

02

## BACKWARD AND FORWARD CONNECTION

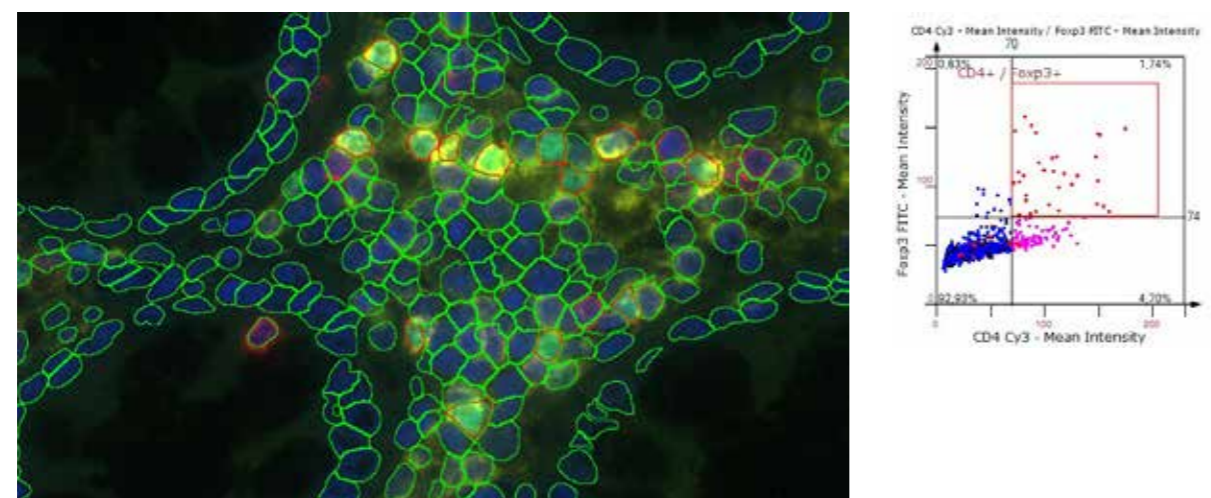
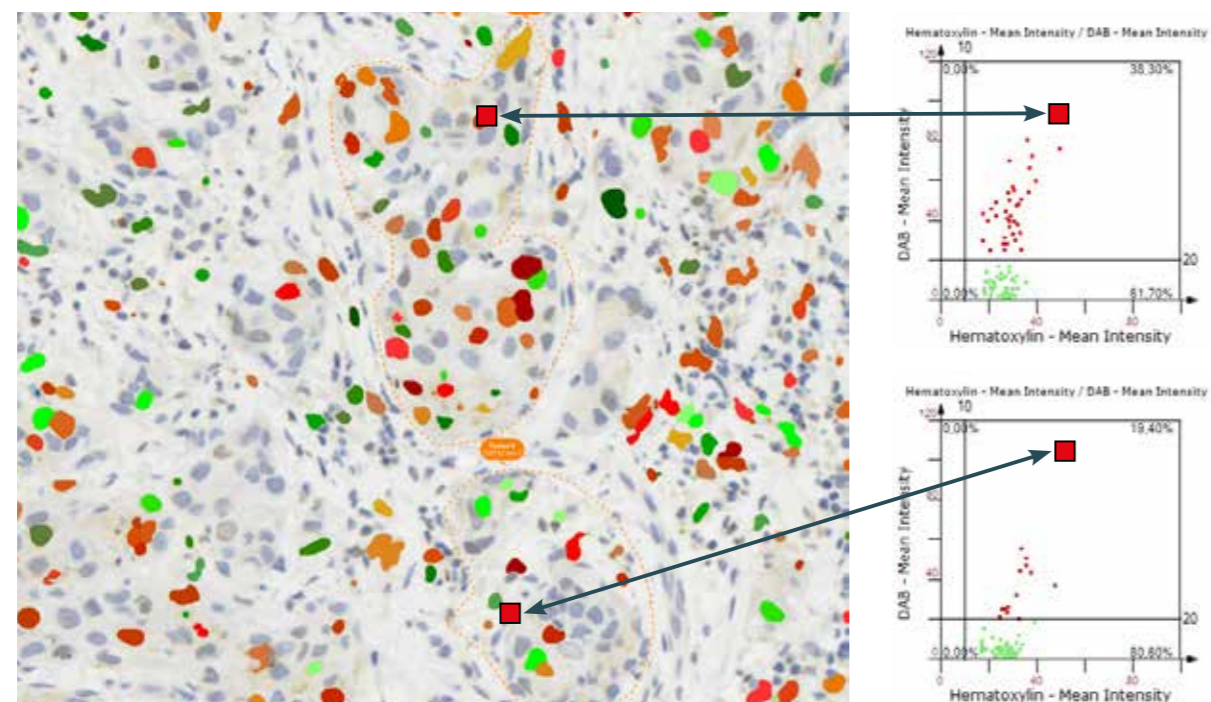
Evaluate your results by selecting any event or group of events (gate) in the scattergram to immediately highlight the corresponding cell(s) in the image and vice versa. Users gain control of the accurately analysed data and can verify outliers with ease. Real-time backward gating from scattergram quadrants and gates is used to interactively set cut-offs in the absence of an isotype-matched negative control.

03

04

05

06



01

## IMAGE COMPARE SETS

Easily display multiple virtual slides for comparison and review. Use TissueGnostics registration algorithm to align consecutive tissue sections stained with different markers. Compare the analysis of the same histological structure across multiple samples.



02

03

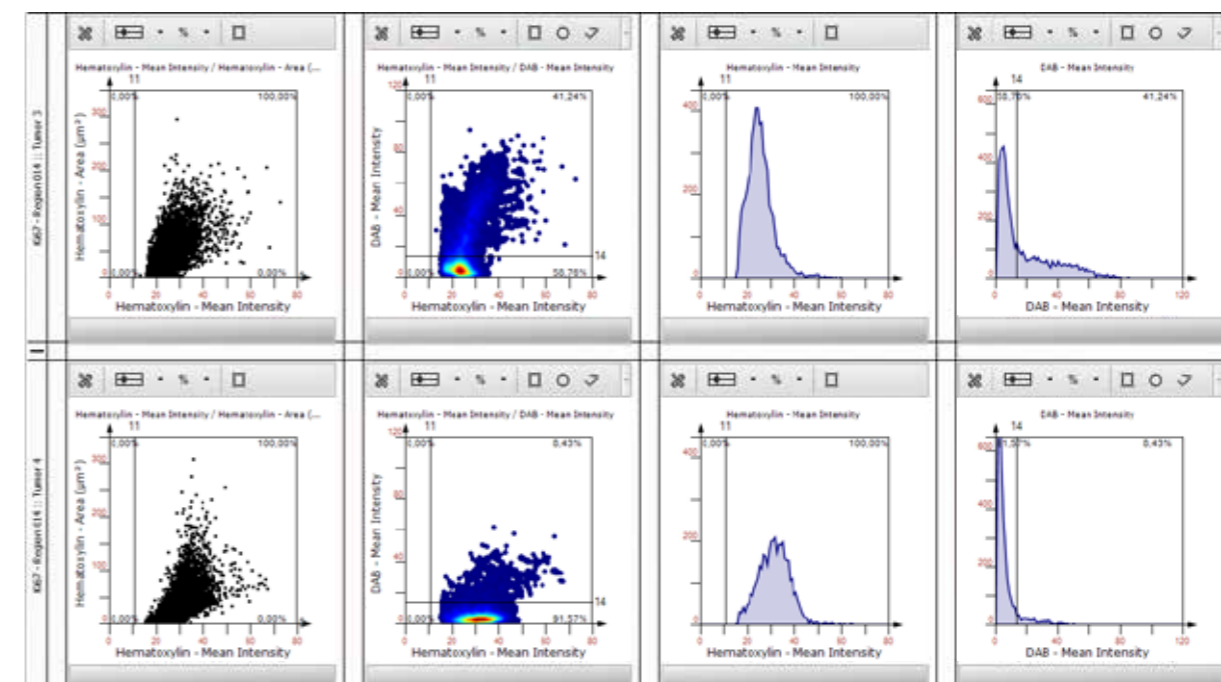
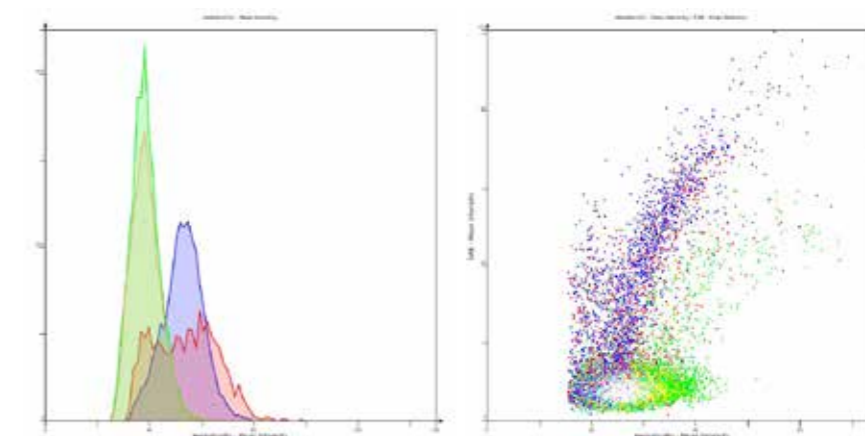
04

05

06

## DATA COMPARE SETS/OVERLAY DIAGRAMS

Perform side-by-side or overlaid comparison of diagrams within a project.



Analyzed parameters of cellular characteristics and marker expression can be compared among different regions and/or samples.

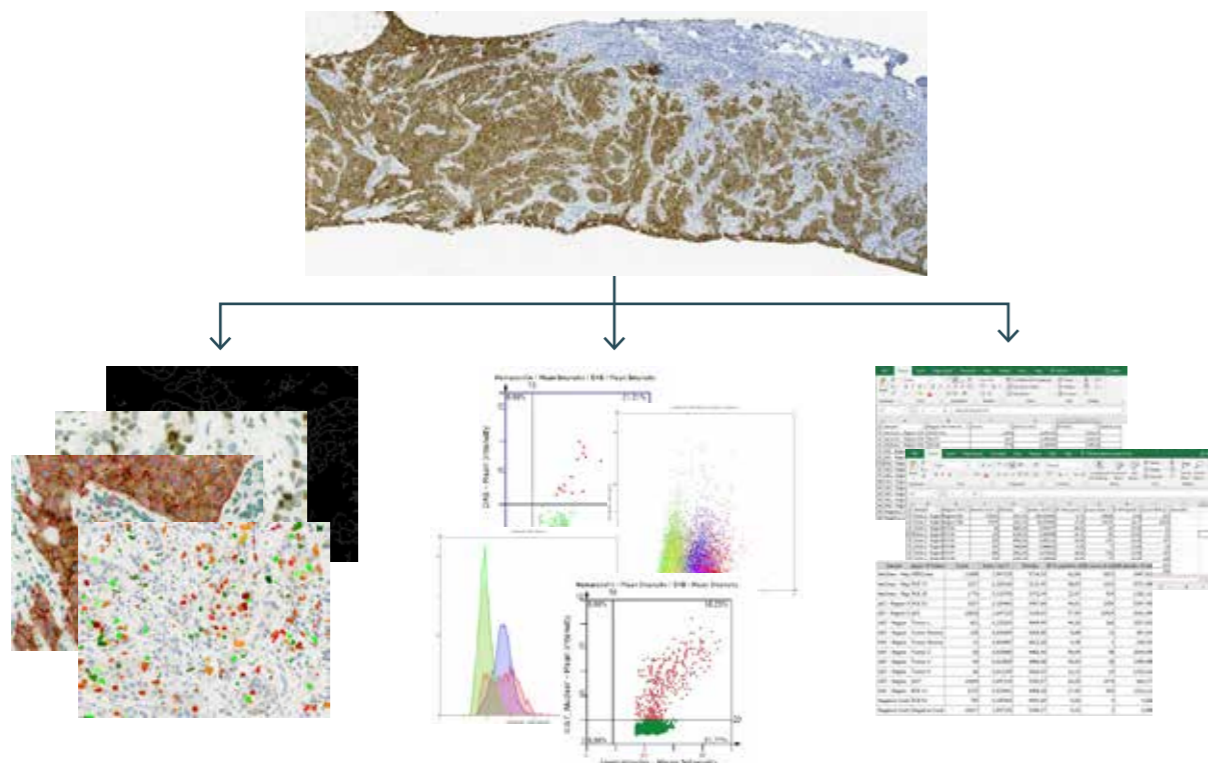
01  
02  
03  
04  
05  
06

**06 EXPORT RESULTS**

Report upon measured ROIs and full samples using the Statistics Report. Export data in .xlsx, .pdf or .csv file formats. Export images and diagrams in a range of file formats (TIFF, BMP, PNG, JPG). Every measured value of each cell is available for list review and backward connection or export as raw data.



TissueQuest AND HistoQuest offer you the possibility to get the maximum of information from your stained tissue sections, cell cultures and TMAs.



**TG USER EXPERIENCES**



**A WORLD OF DIFFERENCE**

»The addition of the TissueFAXS INVERTED PLUS to our core facilities' repertoire has made a world of difference to the ease of data collection and processing. The acquisition software is remarkably well-designed, offering extreme flexibility without compromising on the robustness and ease of use for the whole system.«

*(Dr. Jan Soetaert, Queen Mary University of London)*



**THE BEST STATE OF ART**

»I have been working with the TissueFAXS Cytometer and the analysis software from TissueGnostics for more than 10 years. My focus was to determine markers in the tissue, not only to determine the protein expression profile of the marker but also the subcellular location within the tissue. Looking into other systems, the TissueGnostics systems still provide in my opinion the best state of art and a unique analysis platform. I'm a strong TissueGnostics supporter and will continue the investigation of protein expression with the TissueFAXS analysis system in cancer tissue.«

*(Dr. Franco Fortunato, University of Heidelberg)*



**ULTIMATE TMA MODULE**

»HistoQuest is the ideal tool for TMA-Analysis. Superior data management and intuitive user interface, for exact and quantitative analysis of every single core.«

*(Professor Dr. Lukas Kenner, Ludwig Boltzmann Institute for Cancer Research, Vienna, Austria)*



**REFERENCE PUBLICATIONS**

TissueGnostics systems produce valuable research imaging on six continents around the world and the list of publications grows daily. Check TG's searchable online database of publications to see how TissueGnostics can support you!

[www.tissuegnostics.com](http://www.tissuegnostics.com)

## MEET US GLOBALLY



**TissueGnostics Austria**  
**GLOBAL HEADQUARTER**

Taborsstrasse 10/2/8  
A-1020 Vienna

**AUSTRIA**

Tel.: +43/1/216 11 90

office@tissuegnostics.com



**TissueGnostics Asia Pacific**  
**BRANCH CHINA**

Room 506,  
No.6 Auto Museum East Rd,  
Fengtai District Beijing

**CHINA**

Tel.: +86/400/898 1980

office@tissuegnostics.cn



**Tissue Gnostics USA**  
**BRANCH NORTH AMERICA**

12522 Moorpark Street  
Suite #106  
Los Angeles, CA 91604

**USA**

Tel.: +1/818/856 8056

office@tissuegnostics.com



**TissueGnostics Romania**  
**BRANCH EASTERN EUROPE**

RO17719397  
Str. Sf. Andrei, nr. 15A  
700028 Iasi

**ROMANIA**

Tel.: +40/332/40 58 66

office@tissuegnostics.com

*[www.tissuegnostics.com](http://www.tissuegnostics.com)*